

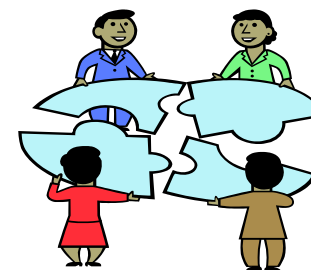
Email networks for Headingley residents since 2004

Chat@headingley is an email network for residents, run by residents. All sorts of supportive and positive messages have been exchanged since 2004. Our aim is community self-reliance, so asking for, and offering, help is welcome.

The network supports relationships in the real world, so residents register with their real names. Messages are not displayed to non-members. To read further details and to join, go to www.headingley.org.

Let's have physical distancing and social solidarity. Don't be alone! If you are already a member, please spread the word so that nobody has to be out of touch.

Please print and distribute
Headingley.org is supported by Headingley Network



Email networks for Headingley residents since 2004

Chat@headingley is an email network for residents, run by residents. All sorts of supportive and positive messages have been exchanged since 2004. Our aim is community self-reliance, so asking for, and offering, help is welcome.

The network supports relationships in the real world, so residents register with their real names. Messages are not displayed to non-members. To read further details and to join, go to www.headingley.org.

Let's have physical distancing and social solidarity. Don't be alone! If you are already a member, please spread the word so that nobody has to be out of touch.

Please print and distribute
Headingley.org is supported by Headingley Network